

Kotlyarova Katerina Stanislavovna,
Postgraduate student,
V.I. Vernadsky Crimean Federal University,
Simferopol.

EVALUATION OF THE STATE OF INVESTMENT ACTIVITY IN THE SPHERE OF TOURISM OF THE REPUBLIC OF CRIMEA

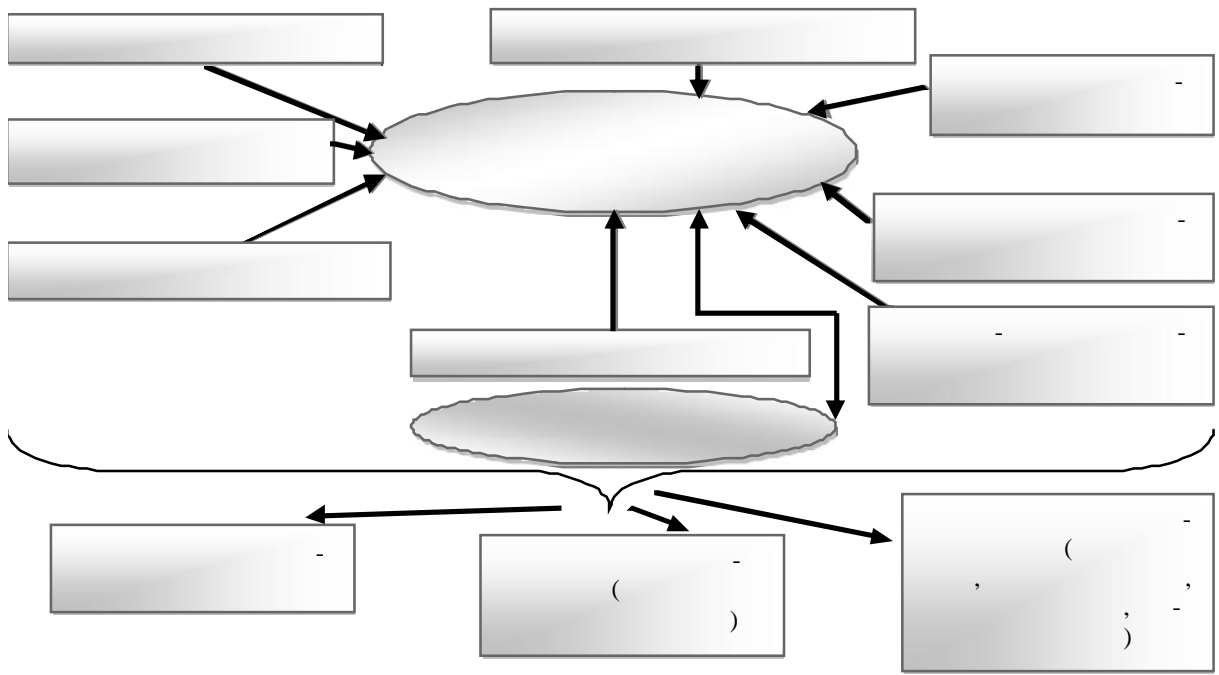
2014–2015 .,

The research of a condition of investment activities in the sphere of tourism is rather relevant for many regions of the country that is caused by need of development of tourist activity, formations of favorable conditions as for domestic, and foreign tourists. It will allow to change cash flows in the country. Will provide conditions for growth in incomes of regional budgets at the expense of tax revenues from tourist activity. The methodological basis of a research is made by methodical provisions and tools of economic science. At the solution of objectives general scientific methods — the analysis and synthesis, ascension from abstract to concrete were used. In the course of carrying out a research economical and statistical methods were used. During the research influence of effective implementation of investment activities on functioning of economy of the region is defined. On the basis of statistical data the analysis of investment activity for 2014–2015, including by types of economic activity and in comparison with regions of the Southern Federal District is carried out. The current state of investment activities in the sphere of tourism is defined, the major factors influencing change of investment activity are revealed. On the basis of the conducted research theoretical and methodical provisions on use of system of methods on regulation and stimulation of investment activities in the region, including in the sphere of tourism and also on formation of attractive investment climate of the region are developed and proved.

Keywords: investment, investment activity, investment climate, regulatory mechanisms.

[6],

[16], . . . , . . . [2], . . . [4], . . . [1], . . . [5], . . . -
[18] , -
:
-
-
-
-
-
-
-
-
-
-
-
-
-
[16]. , -
2015 . . . , 2017 . . , -
248,2 . . . , 130 -
-443
[19]. , -
[21], -
-
-
« - » [2]. -
, « -
, » [20]. -
(. 1).
2016 24 -
« » [21] (. 2). -
2000 2015
72 .



. 1.

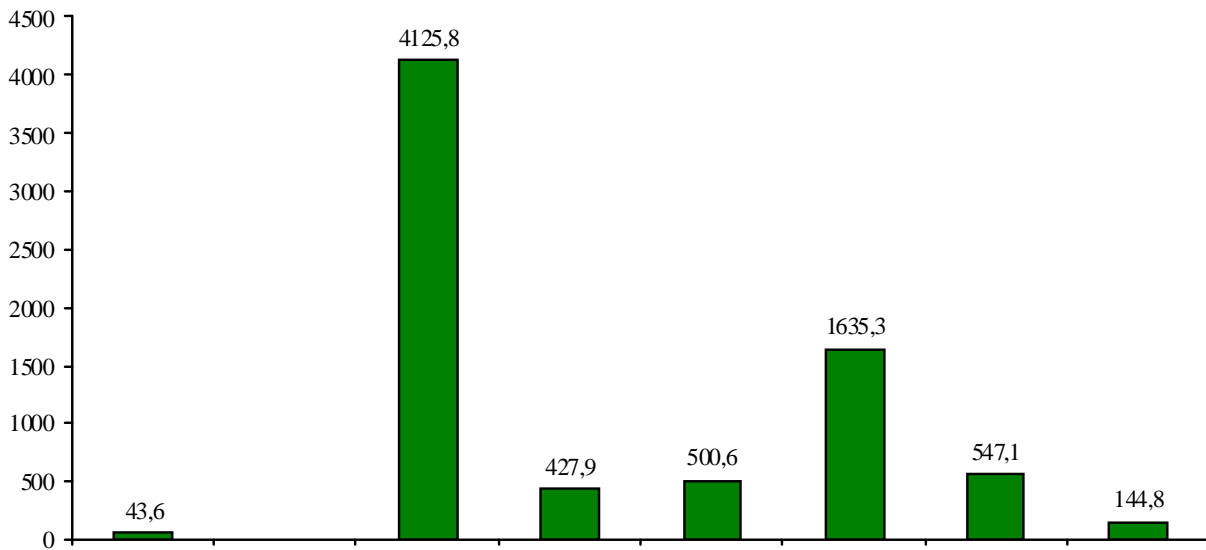


. 2.

2000–2015 . ([21])

2015 ., 0,8 % 2000 . 0,3 %

3, 2015 . (1635,3 .).



.3.

2015 .) (.) ([21]).

1.
2014-2015 .*

	2014		2015		%
	.	%	.	%	
	264 46 816	100	22590649	100	-14,6
:	7559729	28,6	511092	2,2	-93,2
(,) -	101 93 067	38,5	8042197	35,6	-21,1
, , -	7378489	27,9	11919947	52,8	61,6
	1315531	5	2117412	9,4	60,9

* [19]

2014-2015 .

2015

14,58%.

() (35,6%).

2015

93,2%.

2014-2015 .(

)(.2).

2015 1542128 . . 2014 .. 126,9%).

2.

2014–2015 . *

	2014		2015		%
	.	%	.	%	
	12174515	100	22590649	100	185,6
	1102063	9,1	1245577	5,5	113
	459344	3,8	1612224	7,1	350,9
	842687	6,9	1311487	5,8	155,6
	2036738	16,7	2545948	11,3	125
	26578	0,2	150029	0,7	564,5
	330608	2,7	463419	2,1	140,2
	1215059	10	2757187	12,2	226,9
	1351345	11,1	3456850	15,3	255,8
	78102	0,6	89522	0,4	114,6
	496465	4,1	932492	4,1	187,8
	1471153	12,1	2007468	8,9	136,5
	1033205	8,5	2233812	9,9	216,2
	1471714	12,1	2920397	12,9	198,4
	259454	2,1	864132	3,8	333,19

* [19]

« »()

2015 « »(—)

2020 5 « »()

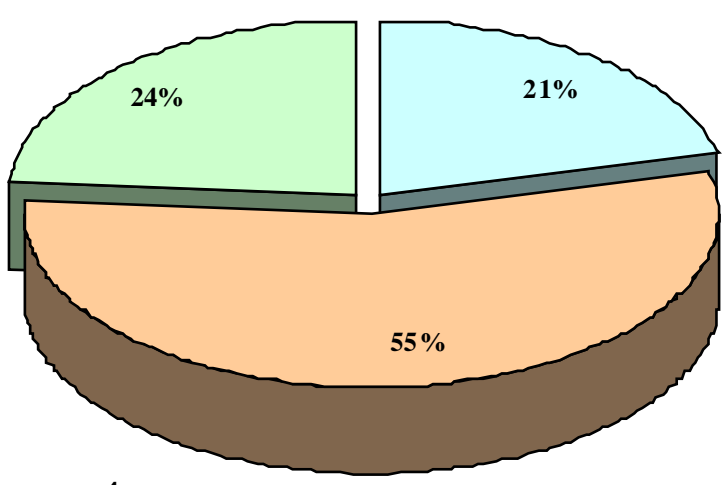
2020 23708,32 (— 1048,86)

22659,46 ()

170

2030 , -
 , -
 , -
 (,) -
 , -
 , -
 : « -
 » « -
 ».

2014–2016 . 2016 — 100 293
), 79,8 (, (,) ,



2017 — -
 80 -
 (-
 ;
) 60,4
 . (.4).

.4. 2017 . (- 48,4 2017 . (-
 7

33,3 .), (.5).

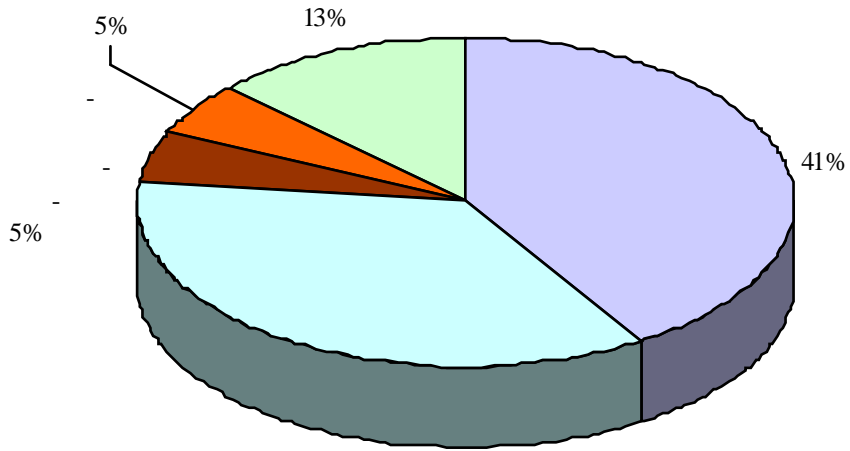
—), 29.11.2014 -
 377- « -
 ».

2017

103

13,3

4997



.5.

36%

41%

15

9

12

2017-2020

[14].

77

● , - , —

● ;

● ;

● ;

● ;

● ;

● ;

● ;

● ;

● ;

● ; ()

● ; ()

● ;

● - /

● ,

● ,

● ,

● -

● ,

● ,

● ,

● ,

● ,

● ,

1. . . . // —2015.— 4.— / . . . — 133–138.

2. : : . — : ,2005.— 470 .

3. : . / . . . —

2016.— 12.— . 225–228.

4. . . . // . — 2016. — 8-1 / (13). — . 63–70.
5. . . . // . — 2016. — 5. — . 34–38
6. . . . // — : « », 2016. — . 50–52. XIV
7. : www2.unwto.org/ru/home (: 28.07.2017). [] —
8. « . »: . [: www.invest- in- crimea.ru/(: 28.07.2017).] —
9. : mtur.rk.gov.ru/rus/info.php?id=617786 (: 28.07.2017). [] —
10. : minek.rk.gov.ru/rus/info.php?id=613652 (: 28.07.2017). [] —
11. 29.11.2014 377– [] — : government.ru/ (: 25.07.2017).
12. — 2030 : . 09.01.2017 352– /2017 [] — : minek.rk.gov.ru/file/File/minek/2017/strategy/strategy- fullvers.pdf (: 25.07.2017).
13. « » 2017–2020 »: 18.01.2017 9 () [] — : minek.rk.gov.ru/rus/info.php?id=627260 (: 25.07.2017).
14. « - » 2020 : 2014 790 [] — : government.ru/media/files/41d4fa3a896280aaadfa.pdf (: 25.07.2017).
15. « »: [] — : raexpert.ru (: 28.07.2017).
16. . . . () : : 08.00.05 / ; « » . — 2017. — 180 .
17. . 2015: . 2016. — 218 .
18. . . . // XIV . — : « », 2016. — . 283–286.
19. [] — : crimea.gks.ru/wps/wcm/connect/rosstat_ts/crimea.ru/statistics/ (: 28.07.2017).
20. [] / , 2005. — : www.un.org/ru/development/surveys/docs/worlddev2005.pdf (: 28.07.2017).
21. : www.gks.ru/wps/wcm/connect/rosstat_main/rosstat/ru/statistics/accounts/# (: 28.07.2017).
- 22 2017
- 24 2017