

20-25
) [7, c. 87].

[1, c. 52].

) [6, c. 69].

« » [2, c. 48].

« »

(

)

[8, c. 113].

[5, c. 60].

(2006-2009

56% 14% () 76%,

[4]. 38%

(.1).

1

2006-2009 .*

	, %	, %
	87,1	12,9
	32,4	67,6
	31,2	68,8
	21,5	78,5

* [4]

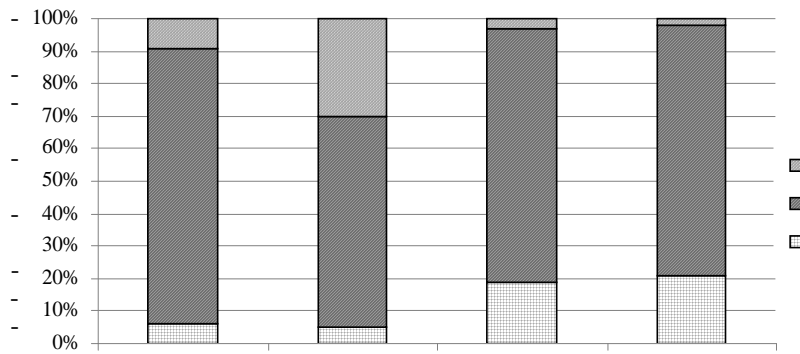
(.2).

80%

6%, 14%

6%,

19%.



. 2.

2006-2009 . [4]

[3, c. 82].

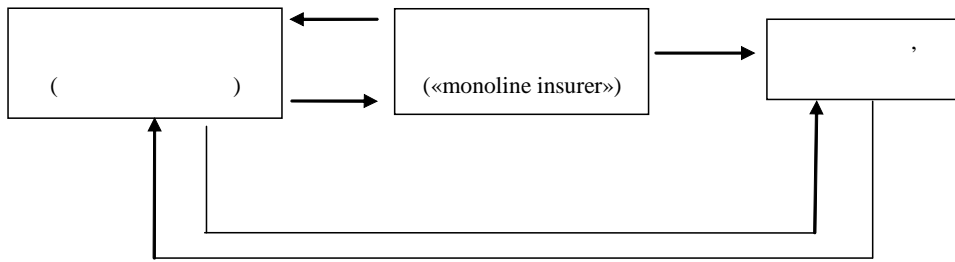
«monoline insurer»,

Fitch,

S&P, Moody's,
[7, c. 218].

«wrapped bonds» « » —

« » / « » (. 3).



[8, c. 140]:

3.

•

1/3 1/2

1.

2.

3.

4 (5). — 70-84.

4. : <http://epp.eurostat.ec.europa.eu>

5.

6.

— 114 .

7. Gatti S. Project Finance in theory and practice. / Stefano Gatti. — Elsevier Inc. — London, 2008

8. Yescombe E.R. Public-Private Partnerships: Principles of Policy and Finance / E.R. Yescombe. — Published by Elsevier Ltd, 2007

14 2011