

**Borsh Lyudmila Mihailovna,**  
Doctor of Economics, professor,  
the department of finance of enterprises and insurance,  
V.I. Vernadsky Crimean Federal University,  
Simferopol

**Stupak Alexander Andreevich,**  
4th year student on specialization «Economics»,  
V.I. Vernadsky Crimean Federal University,  
Simferopol

-

### SOCIO-ECONOMIC DEVELOPMENT AS IN THE CASE OF THE REPUBLIC OF CRIMEA

The analysis of the socio-economic development was carried out in this article, strong and weak points of the economic development were analyzed. The dynamics of socio-economic development are defined as the main realization of the complex program-oriented mechanism within the federal target program of the socio-economic development.

*Keywords:* geopolitical situation, state support, federal and regional tasks, program and target mechanism, socio-economic development.

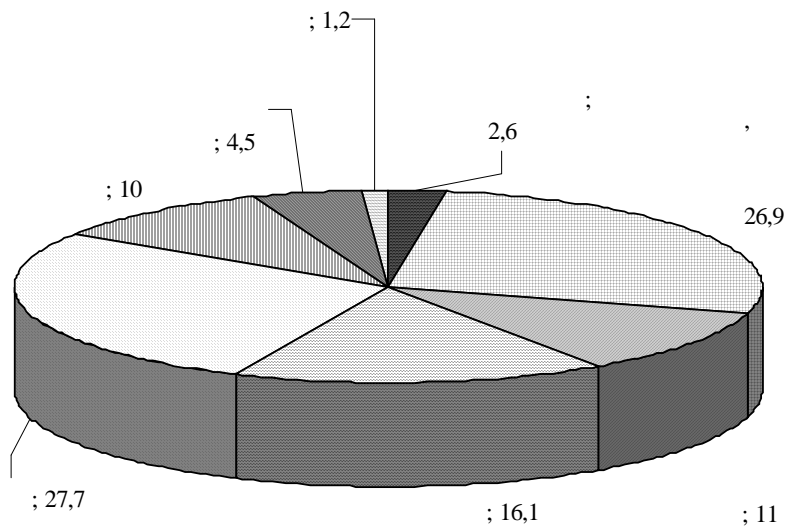
147 2014 16 « 2014 » 17 2014 .  
 [5].  
 18 2014 . . 21 2014 .  
 :  
 21 2014 . 168  
 ( , , ),  
 [6].  
 ( 2011 — 190,3 ;  
 2011 — 81,3 . ) ;  
 ( — 316,6 . ) ; ( , ) 2013 — 107,1 . 2013 ;  
 — 66,3 . ; 2013 — 28,3 .  
 ( — 90,3 . ) ; 2013 . — 2340,1 . ;  
 2013 — 5,8 ,  
 — 5,9 ( — 5,5 ) ;  
 — 0,6 ( 2013 — 1,6 ) ;  
 111  
 : , , - 2015 - 1

•

2013 , -  
— 11400 , . — 12400 (

— 29960 ) [8]. [5].

2014 ,%. .1,



2014  
( )

. 1.  
, % ( )  
/ ( );

[4].

» ( — « ) , 2020

[5].

•

« » , ( ) ,

•

», 11 2014 2010-6/14 [2].

.1202 ,

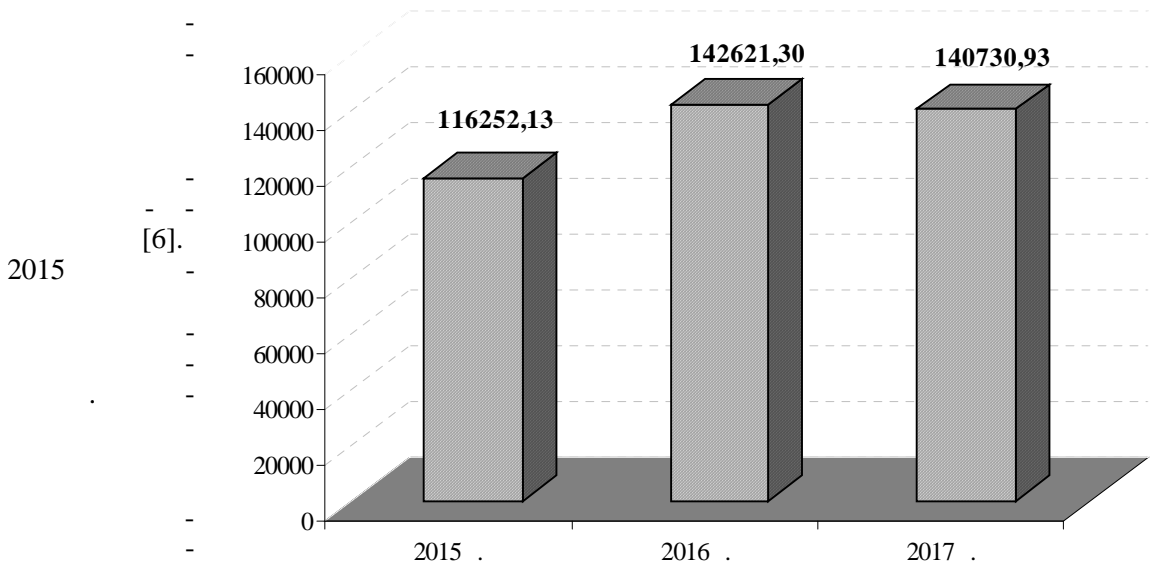
•

« ( » ;

- « ( »;
- « , / »;
- « , » [1].

23 6- ,

2015-2020 681221,18 2016  
116252,13 , 2017 140730,93



[6].

[7]. .2. 2015-2017 .( )

18 50 2014

900 4,5 2014 [8]. 2013 3,6 23

», 586 , 2 . 900 , 26 ( , 5 400 . 10 «

, 84

- 
1. : 30.11.1994 51- ( 21.10.1994): ( 05.05.2014) // [ ]. — [ .. 2014] ( 16.10.2015).
  2. 31.07.1998 238- ( 16.07.1998): ( . 13.07.2015) // [ ]. — [ .. 2015] ( 16.10.2015).
  3. [ ]. — : rcsme.ru/ ( 16.10.2015).
  4. / . . . [ ]. — : cyberleninka.ru/article/n/aktualnye-problemy-finansirovaniya-novyh-subektov-rossiyskoy-federatsii ( 16.10.2015).
  5. « - 11 2014 . 790 [ ]. — : www.garant.ru/products/ipo/prime/doc/70614732/#13 ( 17.10.2015).
  6. [ ]. — : cyberleninka.ru/article/n/programmno-tselevoy-podhod-v-upravlenii-sotsialno-ekonomicheskim-razvitiem-regiona ( 16.10.2015).
  7. 2020 : - ( . 2020 « - 11 2014 . 790) [ ]. — : dokipedia.ru/document/5184188 ( 17.10.2015).
  8. // . — 2014. — 7. — . 139-147.